

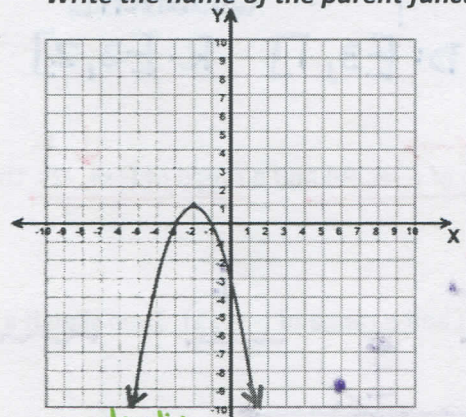
CYU 1.1 Parent Functions

Use when you get it right all by yourself
S Use when you did it all by yourself, but made a silly mistake
H Use when you could do it alone with a little help from teacher or peer
G Use when you completed the problem in a group
X Use when a question was attempted but wrong (get help)
N Use when a question was not even attempted

CONCEPTS	BASIC	INTERMEDIATE	ADVANCED
Constant, linear, absolute value, & Quadratic parent function: name, equation, graph	2, 5, 7	3, 4	1, 6, 8
Domain & Range in interval notation	4	1, 2, 3, 5	6, 7, 8

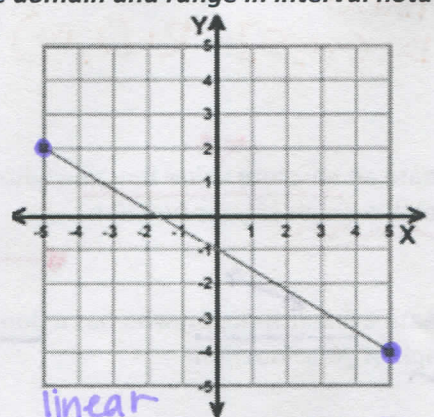
Write the name of the parent function, state the domain and range in interval notation.

1.



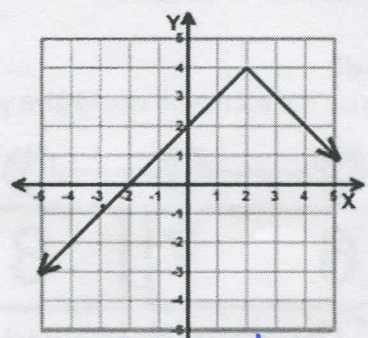
quadratic
 $D: (-\infty, \infty)$ $R: (-\infty, 1]$

2.



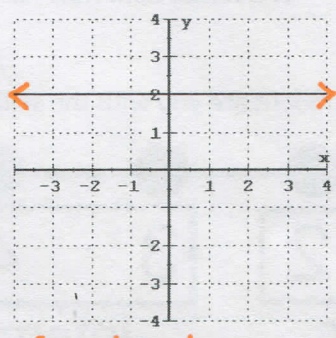
linear
 $D: [-5, 5]$ $R: [-2, 2]$

3.

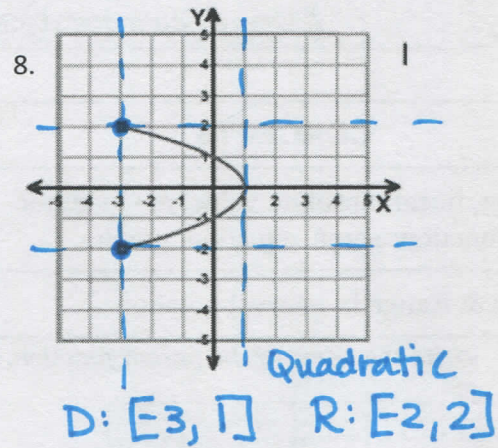
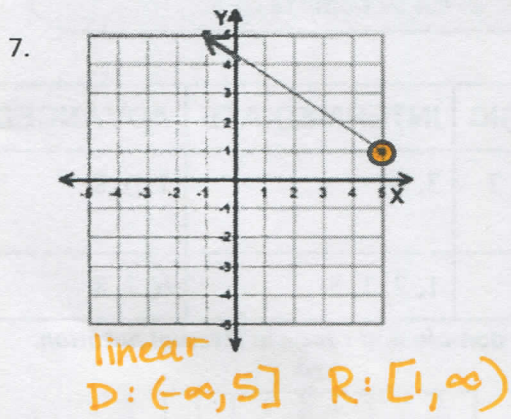
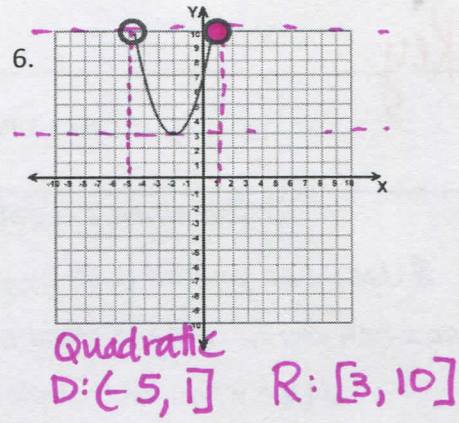
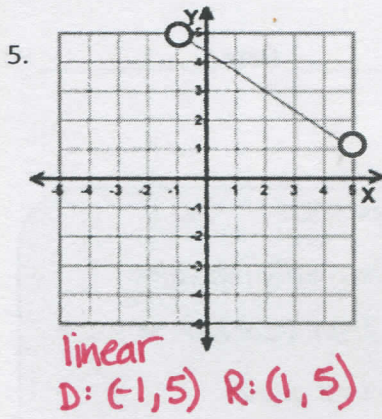


Absolute value
 $D: (-\infty, \infty)$ $R: (-\infty, 4]$

4.



constant
 $D: (-\infty, \infty)$ $R: [2]$



9. Create an absolute value function who has a domain of $(-\infty, \infty)$ and a range of $(-\infty, -2)$. Then sketch a graph of your function.

10. Create a linear function who has a domain of $(-\infty, 2]$ and a range of $(-\infty, 1]$. Then sketch a graph of your function.

CYU Reflection: How far can you go: basic, intermediate, or advanced?

Rate your mastery level!

How confident are you with the skills this CYU covered? Circle the score you would give yourself.

