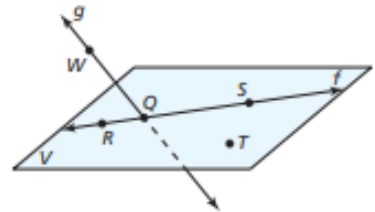


CYU: HGEO 1.1 Points, Lines, & Planes

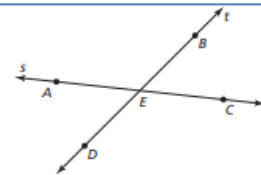
Use when you get it right all by yourself
S Use when you did it all by yourself, but made a silly mistake
H Use when you could do it alone with a little help from teacher or peer
G Use when you completed the problem in a group
X Use when a question was attempted but wrong (get help)
N Use when a question was not even attempted

| CONCEPTS | BASIC | INTERMEDIATE | ADVANCED |
|---|-------------|--------------|-------------|
| Name points, lines, & planes. | 1, 15a | 8 | 9, 14, 15fg |
| Name segments & rays. | 4 | 5, 15e | 14 |
| Collinear & Coplanar | 2 | 3, 9, 12 | 13 |
| Sketch intersections of lines & planes. | 6, 8, 15bcd | 10 | 7, 11 |

1. Give two other names for \overleftrightarrow{WQ} .
2. Name three points that are collinear. Then name a fourth point that is not collinear with these three points.
3. Name a point that is not coplanar with R, S, and T.

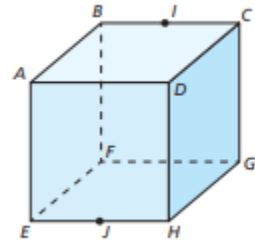


4. Name two pairs of opposite rays.
5. Name one pair of rays that are not opposite rays.

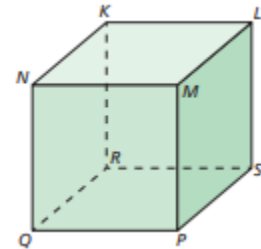


6. Sketch a plane P and line l intersecting at one point.
7. Sketch plane K and line m intersecting at all points on line m.
8. Sketch \overleftrightarrow{AB} and \overleftrightarrow{AC} .

9. Name a point that is not collinear with points B and I.
10. Name the intersection of plane AEH and plane FBE.
11. Name the intersection of plane BGF and plane HDG.



12. Use the diagram to name all the points that are not coplanar with the given points: P, Q, and N.
13. Use the diagram to name all the points that are not coplanar with the given points: Q, K, and L.



14. Graph the inequality on a number line. Tell whether the graph is a segment, a ray or rays, a point, or a line: $|x| \leq 0$.

15. Complete the statements with Always, Sometimes, or Never. Explain your reasoning.
 - a. A line _____ has endpoints.
 - b. A line and a point _____ intersect.
 - c. A plane and a point _____ intersect.
 - d. Two planes _____ intersect in a line.
 - e. Two points _____ determine a line.
 - f. Any three points _____ determine a plane.
 - g. Any three points not on the same lines _____ determine a plane.

CYU Reflection: *How far can you go: basic, intermediate, or advanced?*

Rate your mastery level!

How confident are you with the skills this CYU covered? Circle the score you would give yourself.

1 2 3 4 5 6 7 8

Basic Intermediate Advanced Solved ALL!