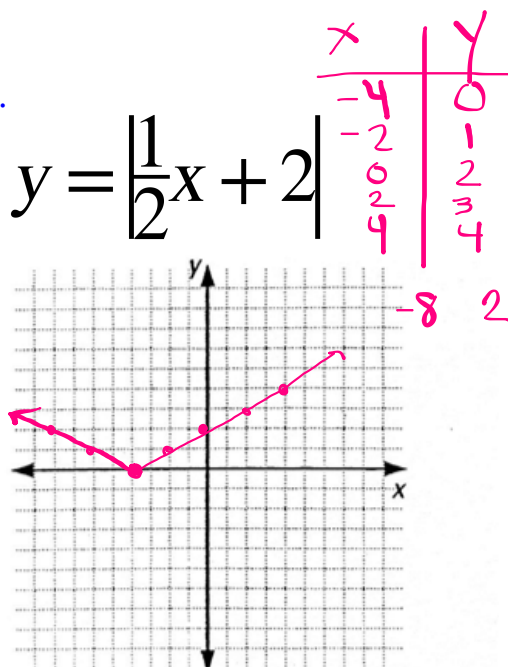
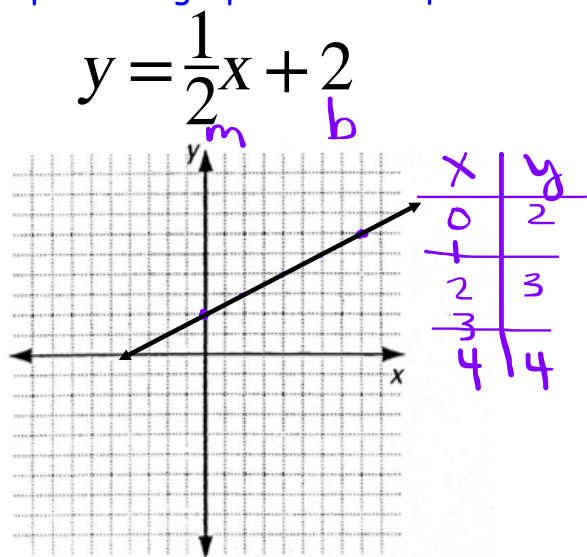


Algebra 1: 3.7 Graphing Absolute Value Equations

Warm-Up

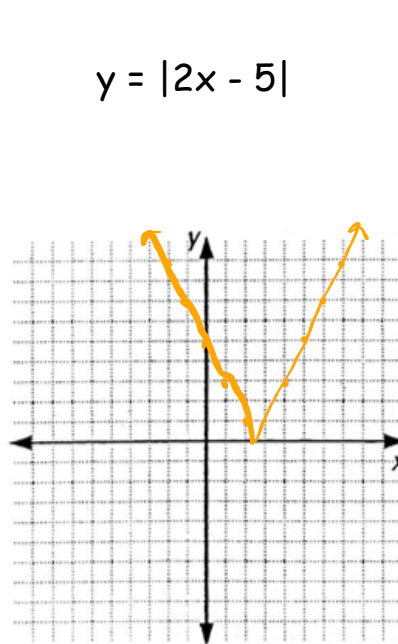
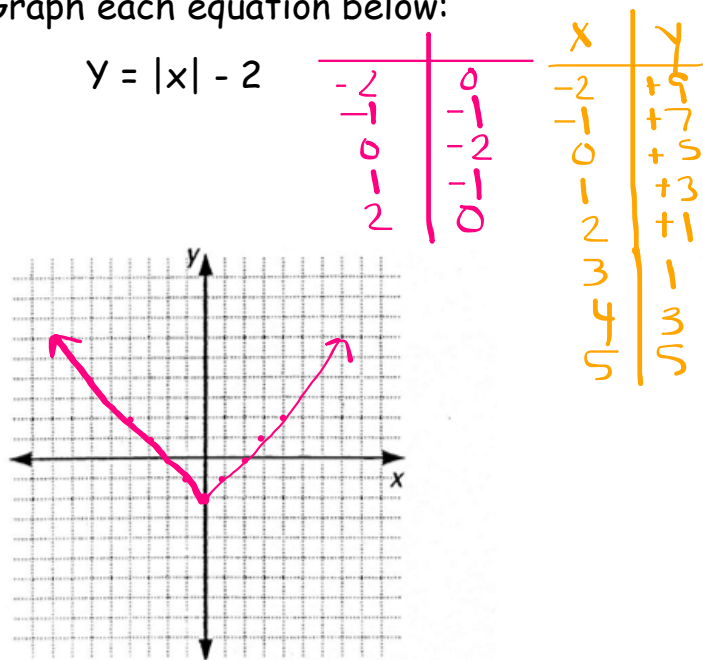
Compare the graphs of the equations below.



Nov 25-10:39 AM

Example 1:

Graph each equation below:



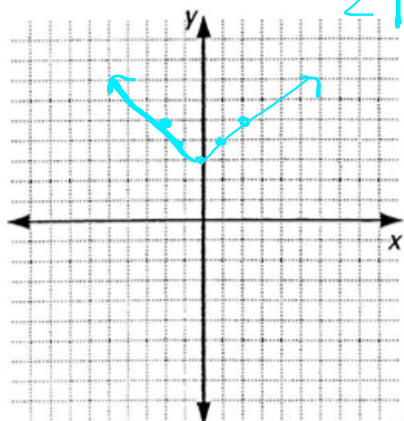
Nov 25-10:41 AM

Your Turn:

Graph each equation below:

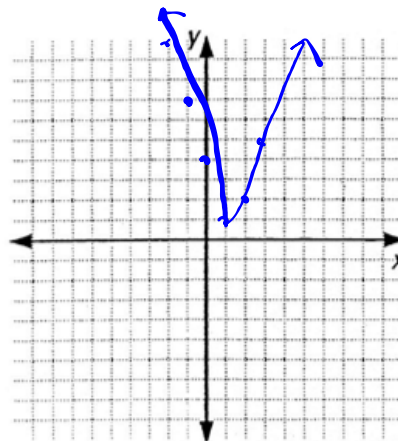
$$y = |x| + 3$$

x	y
-2	5
-1	4
0	3
1	4
2	5



x	y
-2	10
-1	7
0	4
1	1
2	2
3	5

$$y = |3x - 4|$$



Nov 25-10:41 AM

3.7 Assignment pg. 160

Use graph paper again!

Everyone does 5 - 11!