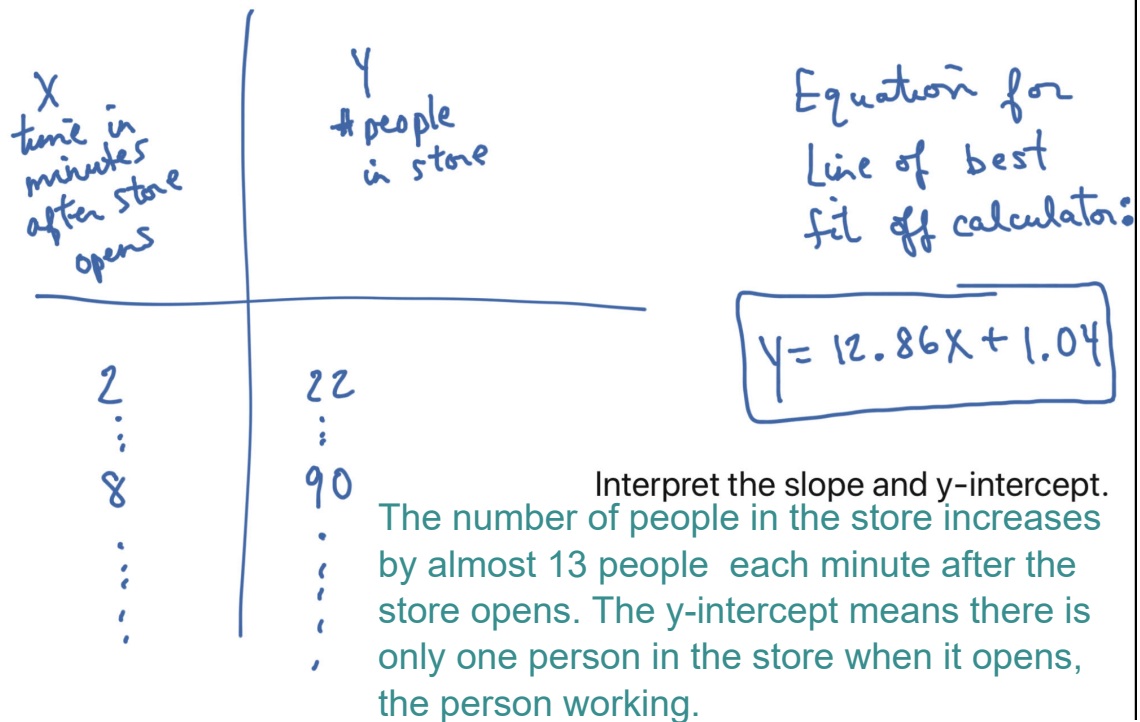


## Algebra 1: 4.5 Analyzing Lines of Fit DAY ONE

WARM-UP:

Nov 14-1:26 PM

## Example 1:

$x = \#$  of minutes coffee sat  
on counter

$y =$  temp ( $^{\circ}\text{F}$ ) of coffee

Equation:  $y = -5.123x + 99.87$

Interpret the slope and y-intercept.

The temperature of your coffee drops 5 degrees Fahrenheit every minute it sits on the counter. The y-intercept means that your coffee starts off at almost 100 degrees Fahrenheit when it is first brewed.

Nov 14-1:26 PM

## 4.5 Assignment

pg. 206

Nov 14-1:26 PM