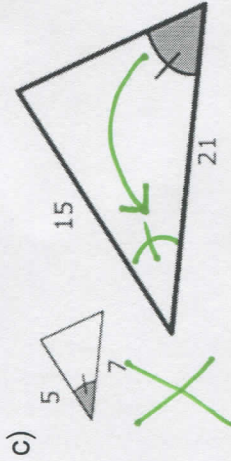
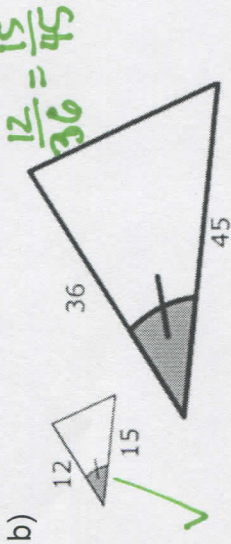
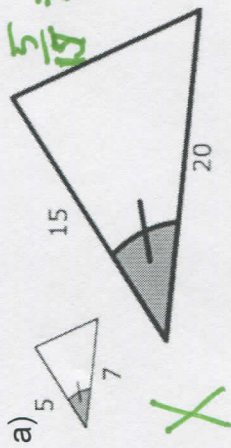


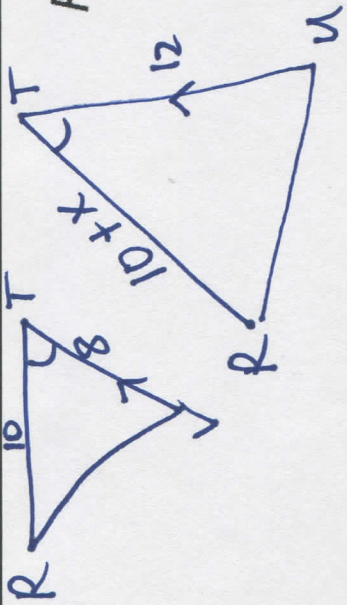
Lesson Title 8.2 & 8.3 Proving Triangles Similar by AA~, SSS~, & SAS~ DAY TWO NOTES HGEO Date _____

TASK 7: SAS~

Are the triangles pictured below similar? If not, state they are not similar.



TASK 8: All mixed up
Explain why $\triangle RSV \sim \triangle RTU$ and then find RT.

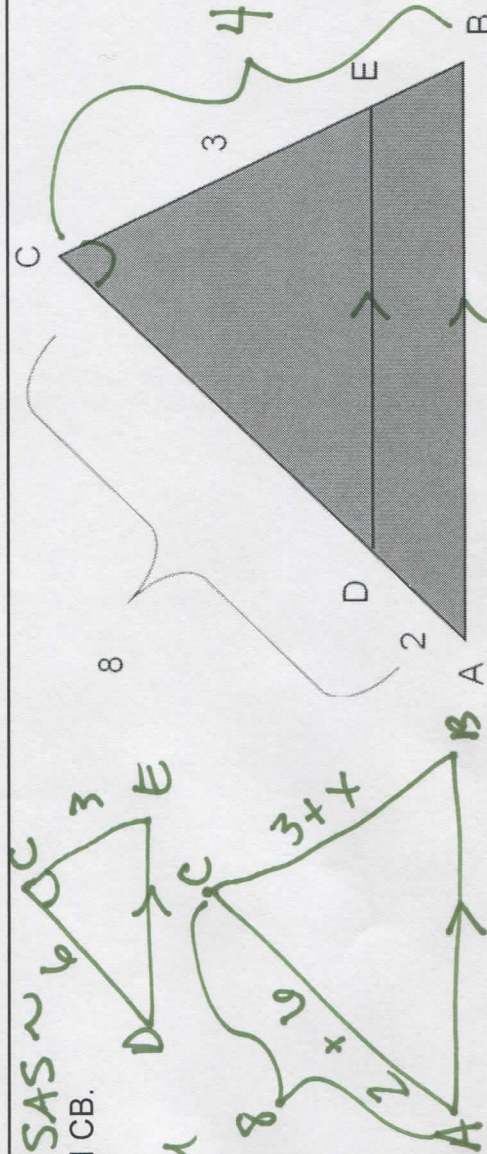


$SAS \sim RT = 15u$

$\frac{10}{10+x} = \frac{8}{12}$

$30 = 20 + 2x$
 $10 = 2x$
 $5 = x$

TASK 9: Determine which postulate... $SAS \sim$
a) In the figure provided, $\overline{AB} \parallel \overline{DE}$. Find CB.



Which postulate did you use?

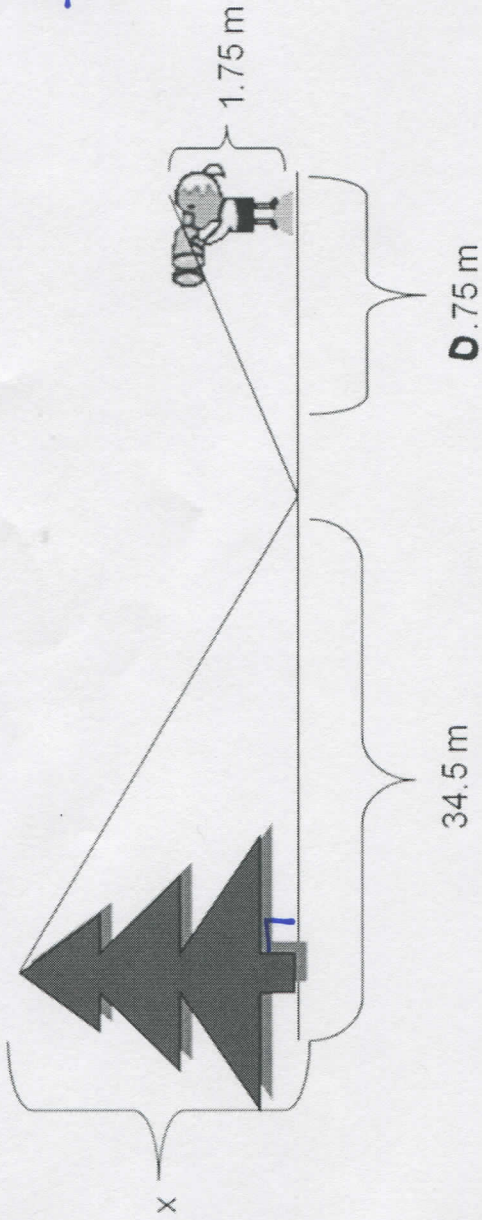
$\angle C \cong \angle C$
Reflexive pbc

$CB = 4u$

$\frac{6}{8} = \frac{3}{4}$
 $\frac{3}{4} = \frac{3}{3+x}$

$9 + 3x = 12$
 $3x = 3$
 $x = 1$

b) How tall is the tree? Which postulate did you use?



$$\frac{x}{1.75} = \frac{34.5}{0.75}$$

$$0.75x = 60.375$$

$$x \approx 80.5\text{ m}$$

Make notes of things you are still struggling with here. Ask for help on them.

Still need help with: