

DIRECTIONS

Answers without work to check. If you cannot find your mistake then please seek help EARLY! This assignment is worth 4 pts. 1) did you complete it 2) did you show all the work 3) did you correct in pen 4) did you get 75% of the problems correct?

TR pg. 164 - 166 answers. Check the ones you were supposed to do for your assignment. Ask questions on any in class that you cannot figure out your mistake. Remember odd answers are always in the back of your textbook.

2. not a function; A vertical line can be drawn through more than one point on the graph in many places.

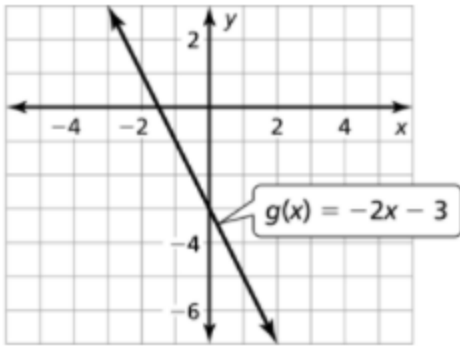
4. a. The amount of money in the bank account is the dependent variable and the hours you babysat is the independent variable.
b. domain: $0 \leq x \leq 4$; range: $100 \leq y \leq 140$

6. nonlinear; The graph is not a line.

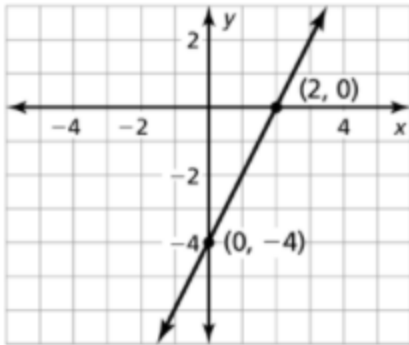
8. 5, 8, 13

10. $x = 7$

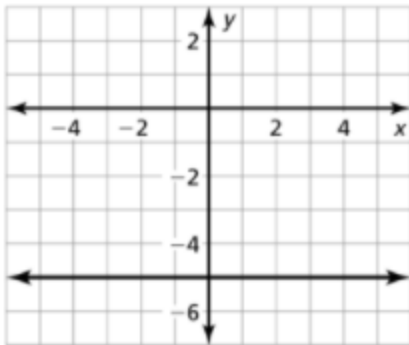
12.



14.



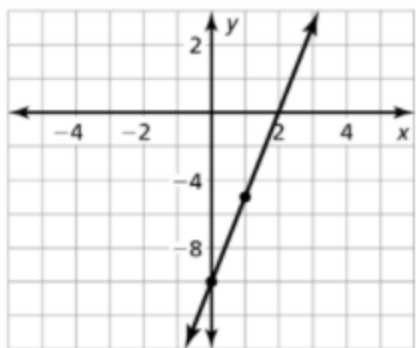
16.



18. $\frac{6}{5}$

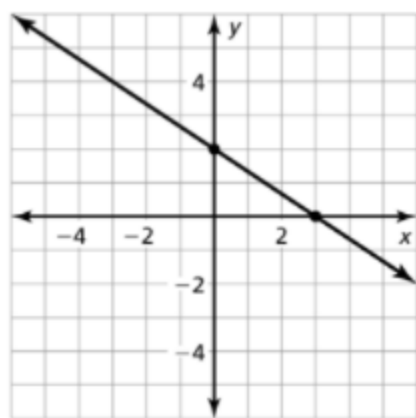
20. 0

22.



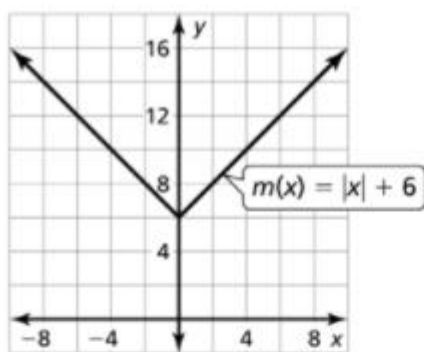
x-intercept: 2

24.



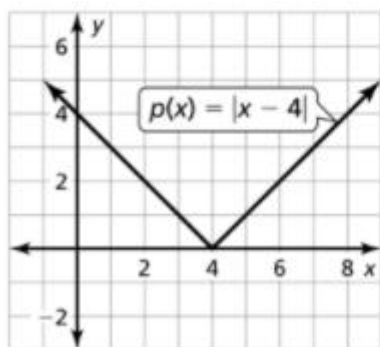
slope: $-\frac{2}{3}$; y-intercept: 2; x-intercept: 3

32.

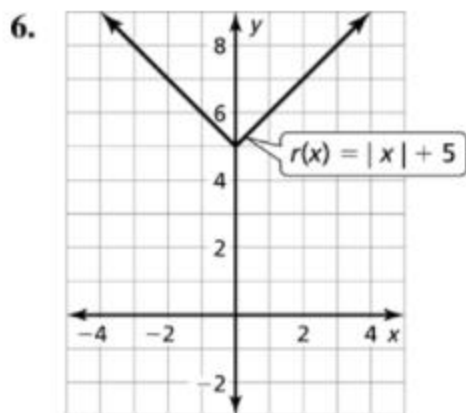


The graph of m is a vertical translation 6 units up of the graph of f ; domain: all real numbers; range: $y \geq 6$

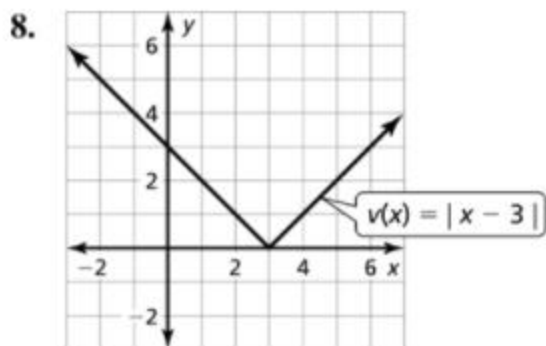
33.



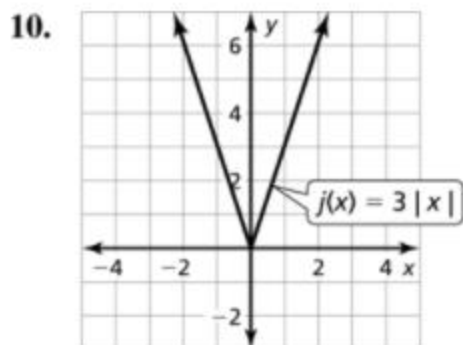
The graph of p is a horizontal translation 4 units right of the graph of f ; domain: all real numbers; range: $y \geq 0$



The graph of r is a vertical translation 5 units up of the graph of f ; domain: all real numbers; range: $y \geq 5$



The graph of v is a horizontal translation 3 units right of the graph of f ; domain: all real numbers; range: $y \geq 0$



The graph of j is a vertical stretch of the graph of f by a factor of 3; domain: all real numbers; range: $y \geq 0$